

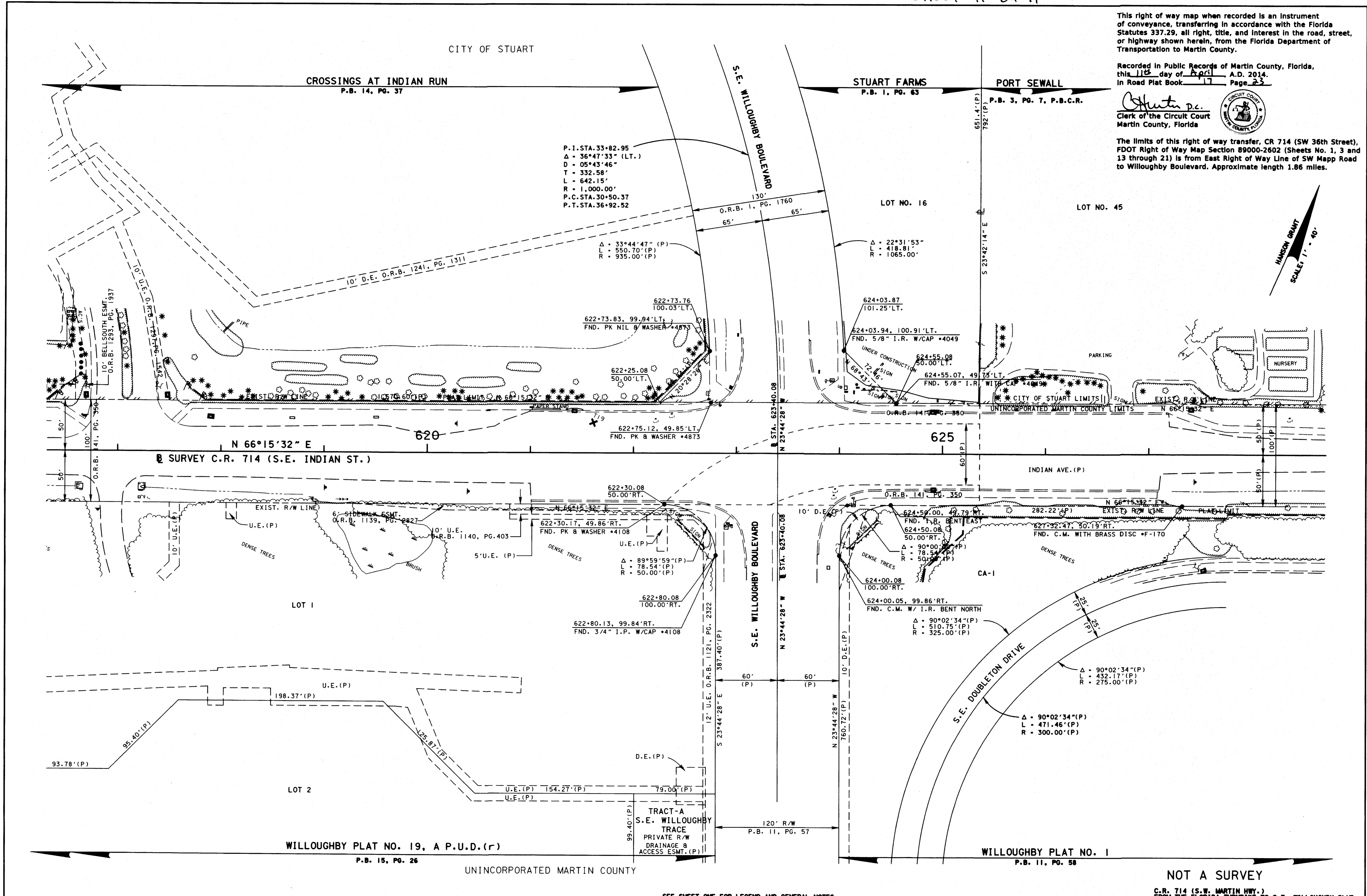
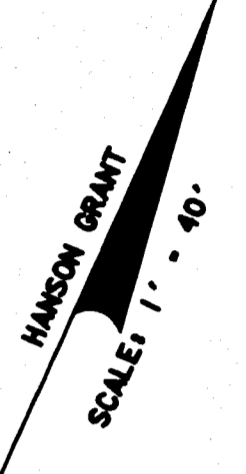
This right of way map when recorded is an instrument of conveyance, transferring in accordance with the Florida Statutes 337.29, all right, title, and interest in the road, street, or highway shown herein, from the Florida Department of Transportation to Martin County.

Recorded in Public Records of Martin County, Florida, this 11th day of April, A.D. 2014, in Road Plat Book 17, Page 23.

Shurtz p.c.
Clerk of the Circuit Court
Martin County, Florida



The limits of this right of way transfer, CR 714 (SW 36th Street), FDOT Right of Way Map Section 89000-2602 (Sheets No. 1, 3 and 13 through 21) is from East Right of Way Line of SW Mapp Road to Willoughby Boulevard. Approximate length 1.86 miles.



RIGHT OF WAY MAP	FLORIDA DEPARTMENT OF TRANSPORTATION RIGHT OF WAY MAPPING	APPROVED BY	DATE	SEE SHEET ONE FOR LEGEND AND GENERAL NOTES		BY	DATE	FED. PROJ. NO. SEE COVER SHEET	SECTION 89000-2602	MAPS PREPARED BY	FIELD BOOK NO. 15
		<i>[Signature]</i>	2/23/09	PRELIM	DURVEA	04-12-02	KEITH & SCHNARS, P.A.	SEE SHEET NO. 1			
DISTRIBUTION OF RIGHT OF WAY SURVEYOR		REVISION	BY	DATE	REVISION	BY	DATE	COUNTY ROAD NO. 714	MARTIN COUNTY	W.P.L. No. N/A	SCALE 1" = 40'
		ADD ORB. 1297, PG. 1542	T. BROWN	05/22/09	FINAL	SANCHEZ	09-30-02	ITEM/SEGMENT No. 230978.1	SHEET 21 OF 26		

flms-rwmapplng\2309781\rdet121.dgn